



CANNON STREET ROAD, LONDON, E1

£1,650 PCM

* VIRTUAL TOUR AVAILABLE * Goldman Greg are delighted to offer this one bedroom first floor apartment located on Cannon Street Road, E1.

The apartment benefits from being bright and airy with plenty of windows letting natural light in, a good size living room with access onto the kitchen, fitted storage in both the living room and bedroom, flooring throughout and a fully tiled bathroom suite.

Cannon Street Road is conveniently located to a choice of local shops and amenities and transport links within the area are excellent with easy access to a selection of stations including Shadwell, Limehouse, Tower Hill, Fenchurch Street and Aldgate/Aldgate East.

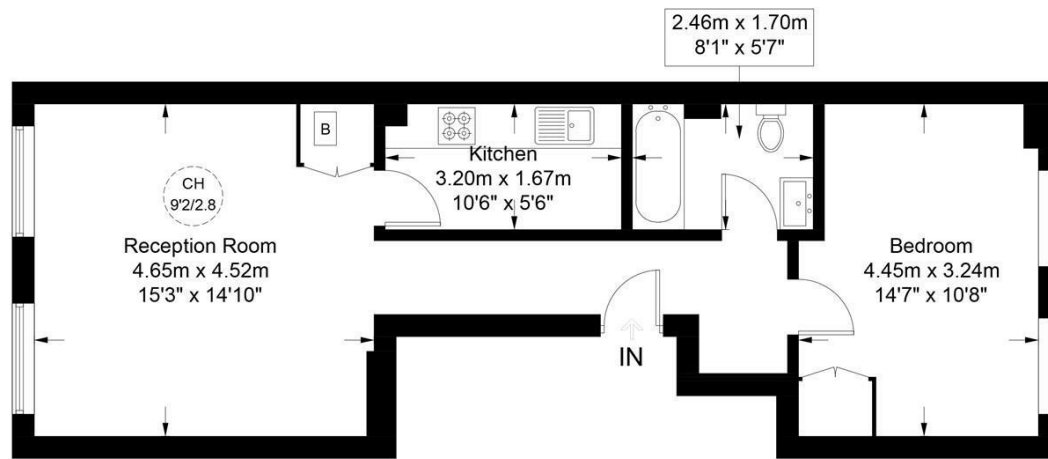
Available immediately, early viewings are highly recommended of this property.



Goldman Greg

Cannon Street Road, E1

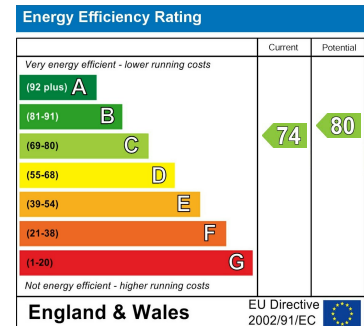
Approximate Gross Internal Area = 569 sq ft / 52.9 sq m



First Floor

PRIME PERSPECTIVES

This plan is for layout guidance only and is not drawn to scale unless stated. All dimensions, including windows, doors, and the Total Gross Internal Area (GIA), are approximate. For precise measurements, please consult a qualified architect or surveyor before making any decisions based on this plan.



Agents Note: Whilst every care has been taken to prepare these particulars, they are for guidance purposes only. All measurements are approximate and are for general guidance purposes only and whilst every care has been taken to ensure their accuracy, they should not be relied upon and potential buyers/tenants are advised to recheck the measurements

Goldman Greg
143 Leman Street
London
E1 8EY

02079770018
leads@goldmangreg.co.uk
www.goldmangreg.co.uk

